

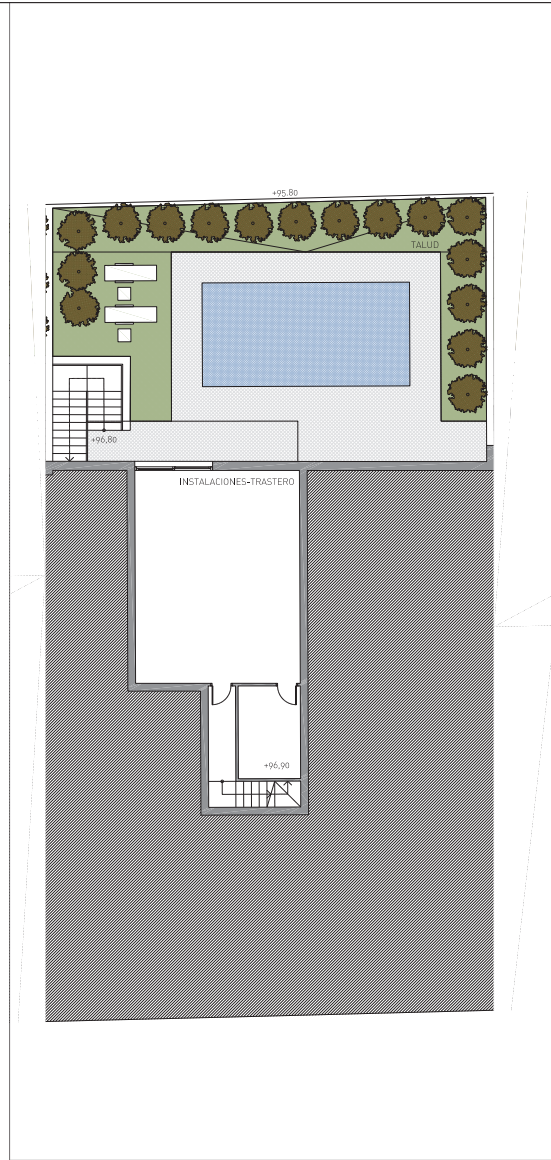
# SITE PLAN



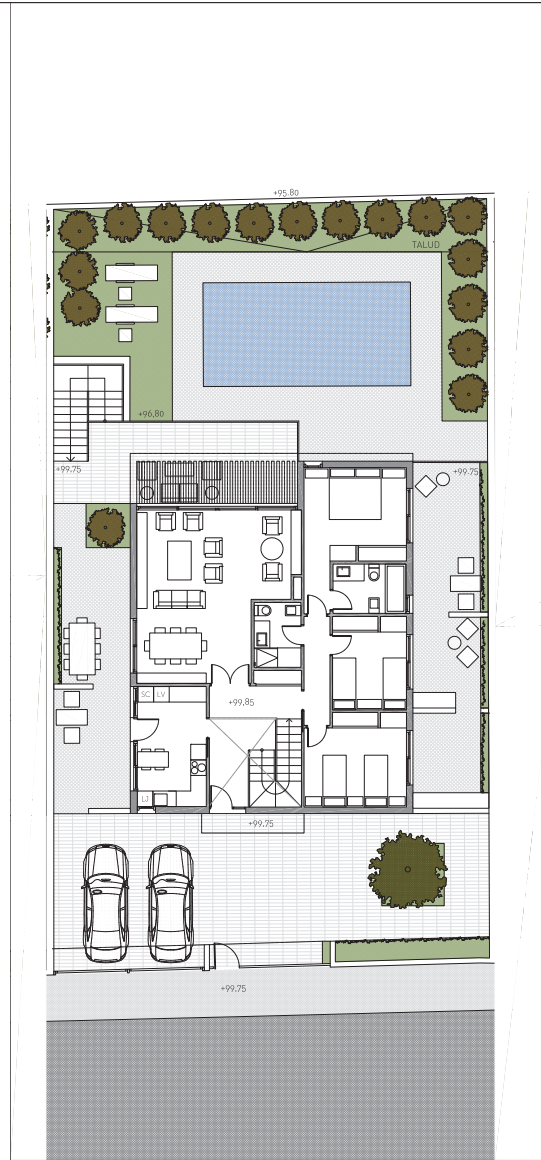
# Type 1 · Villa 2

## TOTAL

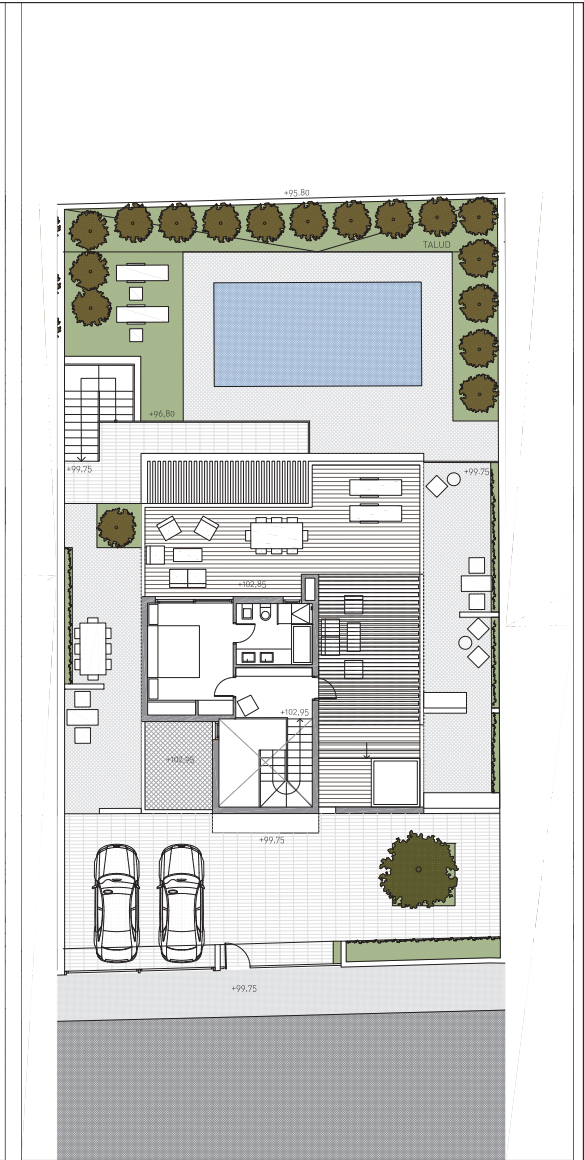
Plot	504,69 m <sup>2</sup>
Total m <sup>2</sup> built	695,08 m <sup>2</sup>
Terraces & Gardens	438,30 m <sup>2</sup>



PLANTA SÓTANO



PLANTA BAJA



PLANTA PRIMERA

m<sup>2</sup> may slightly vary during execution of works.

## Basement Level

Basement 81,00 m<sup>2</sup> built

Pool & Gardens 165,00 m<sup>2</sup>

## Ground Floor

Interior 137,60 m<sup>2</sup> built

Terraces & Gardens 198,95 m<sup>2</sup>

## Top Floor

Interior 38,18 m<sup>2</sup> built

Solarium 74,35 m<sup>2</sup>



## Type 2 · Villa 5

### TOTAL

Plot	587,23 m <sup>2</sup>
Total m <sup>2</sup> built	755,3 m <sup>2</sup>
Terraces & Gardens	499,65 m <sup>2</sup>



m2 may slightly vary during execution of works.

### Basement Level

Basement 78,00 m<sup>2</sup> built

Pool & Gardens 247,75 m<sup>2</sup>

### Ground Floor

Interior 125,50 m<sup>2</sup> built

Terraces & Gardens 189,60 m<sup>2</sup>

### Top Floor

Interior 52,15 m<sup>2</sup> built

Solarium 62,30 m<sup>2</sup>